



BALUSTRADE FENCING

The Guardian Balustrade Glass Fencing range is a modern, architecturally designed modular system that meets NZ safety standards and is easy to install around your outdoor living space.

This buyers guide will help you get started with transforming your outdoor living space.

FEATURES:

- Spigots made from 2205 Stainless Steel
- Toughened safety glass - meets NZS 1170.1 safety standards and wind loads as per AS/NZS 1170.2
- 12 year warranty
- Installation instructions included



www.guardianfencing.co.nz



BALUSTRADE GLASS FENCING



SUITABLE FOR

BALUSTRADE FENCING

- Toughened safety glass - meets NZS 1170.1 safety standards and wind loads as per AS/NZS 1170.2
- Balustrade glass is heat soaked to increase the level of durability.
- Spigots made from 2205 Stainless Steel which can be installed directly onto stable surfaces.

The Guardian Frameless Glass Balustrade Fencing range is a modern, architecturally designed modular system that meets NZ safety standards and is easy to install around your outdoor living space.

The superior grade stainless steel spigots, fittings and glass panels can transform your home into a safe and stylish outdoor living space.

All glass balustrade systems must be installed with a handrail (AS/NZS 11170). Guardian Glass panels are designed for use with a handrail, providing options between Offset and Top Mount handrail.

BEFORE YOU START

- Contact your local council before deciding on your Balustrade requirements.
- Check for all underground services.
- Refer to Guardian Glass Balustrade Producer Statement (PS1).

SUITABLE USAGE

- Guardian Glass Balustrade fencing meets Australian/New Zealand Safety Standards NZS 1170.1 and wind loads as per AS/NZS1170.2
- Spigot Posts - Can be installed on concrete, timber and tiled surfaces.
- Standoff Pins - Can be installed into concrete, timber and steel surfaces.
- Suitable for low to high wind zones.

PANEL DETAILS

- All panels are made from quality 12mm heat soaked toughened safety glass.
- Balustrade Panels are designed for use with a handrail:
Spigot Balustrade - Simply turn glass so holes are covered by the Spigots if using with a Top Mount Handrail.
Face Fixed Balustrade - Designed for use a Top Mount Handrail

CARE INSTRUCTIONS & CONSIDERATIONS

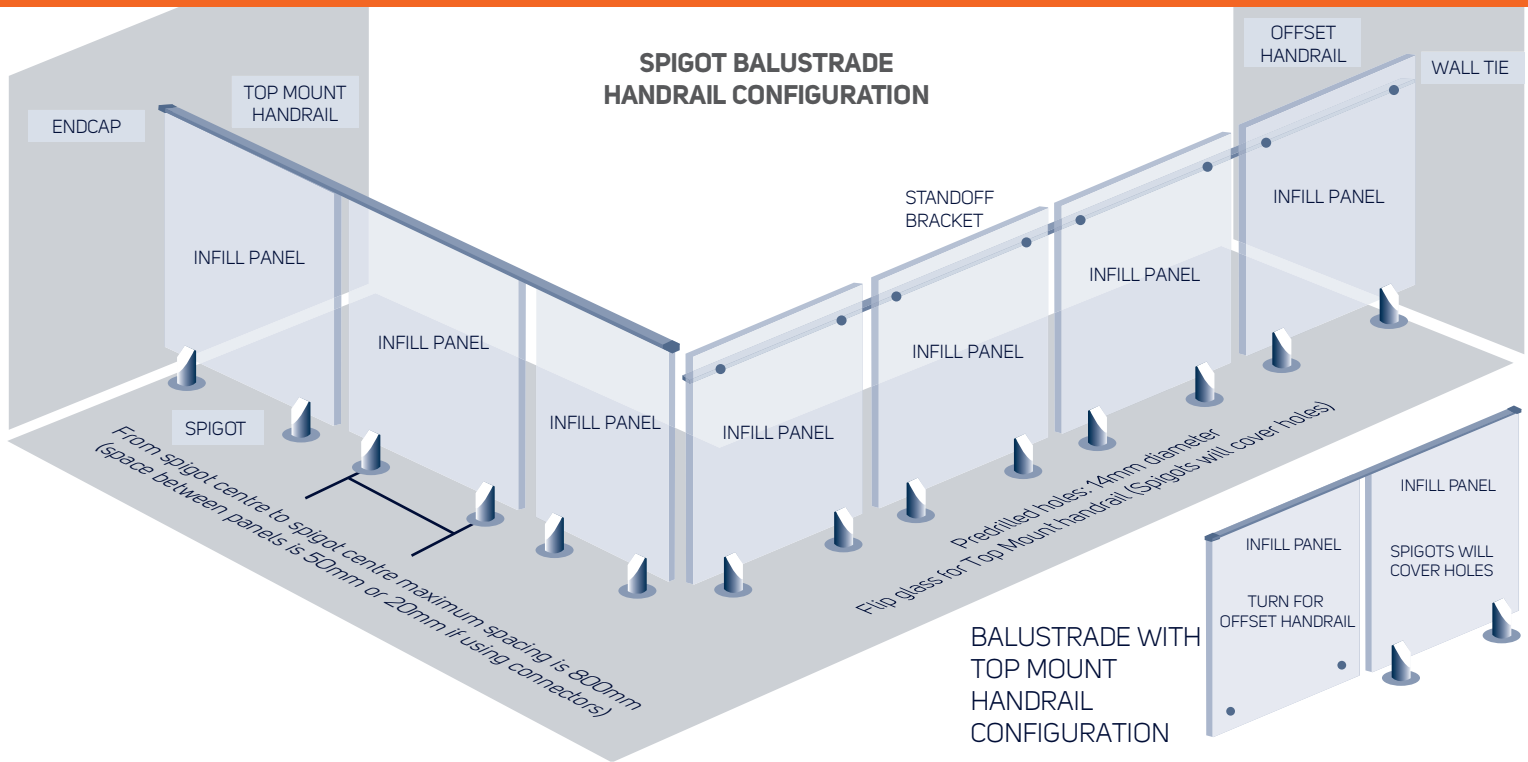
Exposure to UV light, pollution, salt deposits and chemicals can affect the performance of the fencing coating if not removed with regular washing.

A gentle monthly clean with a soft brush, warm water and mild detergent followed by a rinse of fresh water will maintain the finish of both powder coated coloured and stainless steel fencing components.

Components made from 316 marine grade stainless steel are subject to discolouration over time. This does not affect the structural integrity and longevity of the material and can be removed by following correct care and maintenance procedures. For more information, visit www.guardianfencing.co.nz



BALUSTRADE INSTALLATION GUIDE



PLAN, MEASURE & ORDER

- ➔ Use the planner to establish your glass and hardware requirements
- ➔ Calculate and mark on the checklist how many of each component is required.
- ➔ Contact one of our stockists to complete your order

STRING LINE & POSITIONS

- ➔ Set up a level string line.
- ➔ Starting from the end of the string line mark out all Spigot positions.
- ➔ For best appearance Panels should be spaced approximately 50mm apart if not using Inline Joiners and 20mm if using Inline Joiners

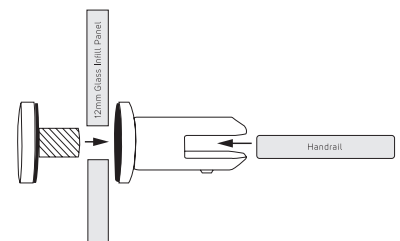
INSTALL SPIGOTS & PANELS

- ➔ Make sure all Spigots are straight for easy glass insertion.
- ➔ Remove cover plates from Spigots, drill the holes and fix the first 2 Spigots. Replace the cover plate.
- ➔ With Offset Handrail: Attach panel with the predrilled holes at the top.
- ➔ Top Mount Handrail: Attach the panel with the predrilled holes at the bottom, holes will be covered by the spigots
- ➔ Attach the panel to the Spigots and adjust to ensure it is level before moving onto the next Panel.

OFFSET HANDRAIL SET UP

- ➔ Fit the Stand Off Brackets into each of the predrilled holes in the panel and tighten
- ➔ Fit End Bracket onto one Handrail. Starting from the end, fit handrail into the Stand Off Brackets and loosely tighten so it holds in place.
- ➔ Working across, connect Handrails together using the appropriate handrail Joiner. Loosely tighten the handrail into the Stand Off Brackets as you go.
- ➔ Finish with an End Bracket. Check positioning before final tightening of all screws.

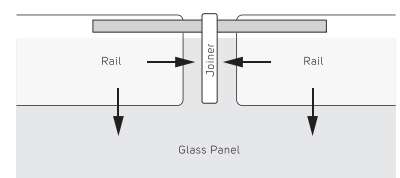
OFFSET SET UP



TOP MOUNT HANDRAIL SET UP

- ➔ Fit desired End Cap onto the rail. Place rail onto glass in position. Working across connect the rails together using the appropriate Joiner. Cut the rail length if needed.
- ➔ Cut rail lengths with a hack saw in a mitre box. Smooth cut ends with a metal file and 180 grit sandpaper.
- ➔ Ensuring components are free of dust and contaminants, glue fittings onto the rail using Loctite 638 or Selleys Araldite Super Strength and wait to dry (24hrs).
- ➔ Remove rail and run a bead of Glazing Silicone (non acid cure) on the top edge of the glass. Replace the rail onto the glass and run a bead of Silicone along the edges of the rail that meets the glass.

TOP MOUNT SET UP



BALUSTRADE MATERIALS CHECKLIST



YOUR TOOLS

- | | |
|--|---|
| <input type="checkbox"/> TAPE MEASURE | <input type="checkbox"/> HEX KEY SET |
| <input type="checkbox"/> STRING LINE | <input type="checkbox"/> HACKSAW/ ANGLE GRINDER |
| <input type="checkbox"/> DRILL & DRILL BIT SET | <input type="checkbox"/> STEEL CAP FOOTWEAR |
| <input type="checkbox"/> SPIRIT LEVEL | <input type="checkbox"/> GLOVES (GLASS GRIP) |
| <input type="checkbox"/> STANLEY KNIFE | <input type="checkbox"/> TIMBER BLOCKS |

BEFORE YOU START

We recommend that before you commence any work that you contact your local council to check regulation requirements.

Producer Statement (PS1) available on request.

GLASS BALUSTRADE PANELS - PRE-DRILLED FOR HANDRAIL SYSTEM

PANEL SIZE	PRODUCT CODE	QTY
600mm x 970mm x 12mm	GF-BPANEL-600	
700mm x 970mm x 12mm	GF-BPANEL-700	
800mm x 970mm x 12mm	GF-BPANEL-800	
900mm x 970mm x 12mm	GF-BPANEL-900	
1000mm x 970mm x 12mm	GF-BPANEL-1000	

PANEL SIZE	PRODUCT CODE	QTY
1100mm x 970mm x 12mm	GF-BPANEL-1100	
1200mm x 970mm x 12mm	GF-BPANEL-1200	
1300mm x 970mm x 12mm	GF-BPANEL-1300	
1400mm x 970mm x 12mm	GF-BPANEL-1400	
1500mm x 970mm x 12mm	GF-BPANEL-1500	

SPIGOT SYSTEM



- STAINLESS STEEL SPIGOT ROUND POLISHED
CODE: GH-SF-RRF-P
- STAINLESS STEEL SPIGOT ROUND SATIN
CODE: GH-SF-RRF-S



- STAINLESS STEEL SPIGOT SQUARE POLISHED
CODE: GH-SF-RSF-P
- STAINLESS STEEL SPIGOT SQUARE SATIN
CODE: GH-SF-RSF-S

GLASS CONNECTORS



- INLINE JOINER POLISHED
CODE: GH-GC-INLINE-P
- INLINE JOINER SATIN
CODE: GH-GC-INLINE-S



- CORNER JOINER POLISHED
CODE: GH-GC90-CORNER-P
- CORNER JOINER SATIN
CODE: GH-GC90-CORNER-S




- END BRACKET POLISHED
CODE: GH-GC-ENDBRACKET-P
- END BRACKET SATIN
CODE: GH-GC-ENDBRACKET-S

HANDRAIL MATERIALS CHECKLIST

OFFSET HANDRAIL SYSTEM

	<input type="checkbox"/> HANDRAIL 4m POLISHED CODE: GHB-HANDRAIL-P		<input type="checkbox"/> STAND OFF BRACKET POLISHED CODE: GHB-STPIN-P		<input type="checkbox"/> WALL TIE POLISHED CODE: GHB-HWALLT-P
	<input type="checkbox"/> HANDRAIL 4m SATIN CODE: GHB-HNDRIL-S		<input type="checkbox"/> STAND OFF BRACKET SATIN CODE: GHB-STPIN-S		<input type="checkbox"/> WALL TIE SATIN CODE: GHB-HWALLT-S
	<input type="checkbox"/> INLINE JOINER POLISHED CODE: GHB-HINLINE-P		<input type="checkbox"/> END CAP POLISHED CODE: GHB-HENDC-P		<input type="checkbox"/> 90° JOINER POLISHED CODE: GHB-HCNRJOIN-P
	<input type="checkbox"/> INLINE JOINER SATIN CODE: GHB-HINLINE-S		<input type="checkbox"/> END CAP SATIN CODE: GHB-HENDC-S		<input type="checkbox"/> 90° JOINER SATIN CODE: GHB-HCNRJOIN-S
	<input type="checkbox"/> ADJUSTABLE CORNER JOINER POLISHED CODE: GHB-HCNRADJ-P				

TOP MOUNT HANDRAIL SYSTEM

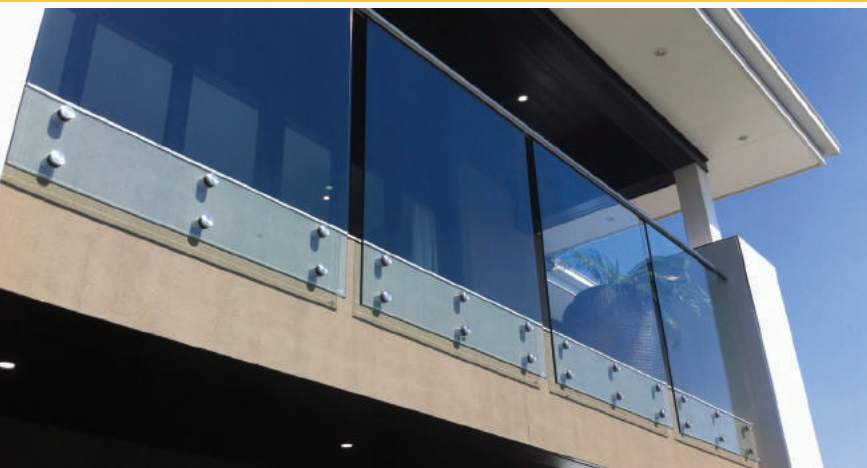
	<input type="checkbox"/> HANDRAIL 2.9m POLISHED CODE: GHB-RIL-SQ2.9-P		<input type="checkbox"/> INLINE JOINER POLISHED CODE: GHB-25SJNR-P		<input type="checkbox"/> END CAP POLISHED CODE: GHB-25SEDCP-P
	<input type="checkbox"/> HANDRAIL 2.9m SATIN CODE: GHB-RIL-SQ2.9-S		<input type="checkbox"/> INLINE JOINER SATIN CODE: GHB-25SJNR-S		<input type="checkbox"/> END CAP SATIN CODE: GHB-25SEDCP-S
	<input type="checkbox"/> WALL TIE POLISHED CODE: GHB-25SWALL-P		<input type="checkbox"/> 90° JOINER POLISHED CODE: GHB-25S90C-P		<input type="checkbox"/> ADJUSTABLE CORNER JOINER POLISHED CODE: GHB-25SCNRADJ-P
	<input type="checkbox"/> WALL TIE SATIN CODE: GHB-25SWALL-S		<input type="checkbox"/> 90° JOINER SATIN CODE: GHB-25S90C-S		

DISCLAIMER

- Customers should not rely solely on the advice of this brochure.
- Guardian Glass Balustrade must be installed with a handrail (AS/NZS 11170).
- Customers should consult a Licensed Building Practitioner if they have any concerns as to the suitability of the surface to which the fencing is being installed.
- Customers need to be aware that the installation needs to comply with the NZ Building code even where a building consent is not required.



FACE FIXED GLASS BALUSTRADE



SUITABLE FOR

BALUSTRADE FENCING

- Face Fixed Standoff Balustrade system is designed for use with a Top Mount Handrail.
- We recommend that before you commence any work that you contact your local council to check regulation requirements. PS1 available on request.

PLAN, MEASURE & ORDER

- Use the planner to establish your glass and hardware requirements
- Calculate and mark on the checklist how many of each component is required.
- Contact one of our stockists to complete your order.

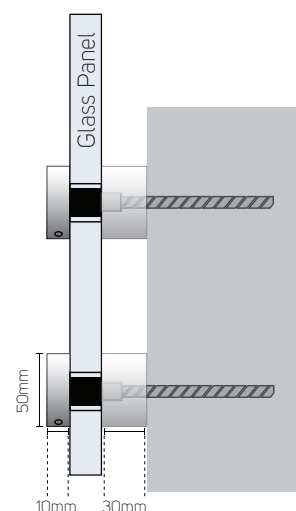
MARK LINE & POSITIONS

- Mark the fence line at the start and finish points of each glass panel.
- Starting from the end of the string line, mark out all Standoff pin positions.
- For best appearance, Panels should be spaced approximately 50mm apart if not using Connectors, and 20mm if using Connectors.

INSTALL PINS & PANELS

- Set up Standoff pins for installation using appropriate fixings.
- Install the glass panels. Tighten the standoff pins using the spanner tool.
- Fit Top Mount handrail onto panels.
- Full installation instructions are available for download on our website.

FACE FIXED SET UP



MATERIALS CHECKLIST

FACE FIXED GLASS PANELS - PRE-DRILLED FOR STANDOFF PINS

PANEL SIZE	PRODUCT CODE	PINS REQUIRED	QTY
600mm x 1280mm x 12mm	GF-FFPANEL-600	4	
700mm x 1280mm x 12mm	GF-FFPANEL-700	4	
800mm x 1280mm x 12mm	GF-FFPANEL-800	6	
900mm x 1280mm x 12mm	GF-FFPANEL-900	6	
1000mm x 1280mm x 12mm	GF-FFPANEL-1000	6	

PANEL SIZE	PRODUCT CODE	PINS REQUIRED	QTY
1100mm x 1280mm x 12mm	GF-FFPANEL-1100	6	
1200mm x 1280mm x 12mm	GF-FFPANEL-1200	8	
1300mm x 1280mm x 12mm	GF-FFPANEL-1300	8	
1400mm x 1280mm x 12mm	GF-FFPANEL-1400	8	
1500mm x 1280mm x 12mm	GF-FFPANEL-1500	8	

STANDOFF ACCESSORIES



- STANDOFF PIN
50 x 30mm
STAINLESS STEEL POLISHED
CODE: GHB-FACEFIXPINP



- STANDOFF PIN SPANNER
(FOR INSTALLATION OF
50mm PINS)
CODE: GHB-SPANNER